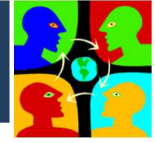


# WISCONSIN COURT INTERPRETER PROGRAM

## Application for 2021 Orientation



110 E Main Street, Suite #410 | Madison WI 53703 | p: 608.266.8635 | e: [alexandra.wirth@wicourts.gov](mailto:alexandra.wirth@wicourts.gov) | f: 608.267.0911

**Instructions:** Complete ALL fields below.

### PART I. APPLICANT INFORMATION

Last Name:		First Name:	
Street Address:			Apartment/Unit #:
City:		State:	Zip:
DOB:	E-mail Address:		Agency (if applicable):
Work Phone:	Cell Phone:	Home/Other Phone:	
Non-English language(s) in which you interpret:	Language 1:	Language 2:	Language 3:

Check the Wisconsin judicial district(s) in which you are willing to work. For a map see: <http://www.wicourts.gov/courts/offices/map.htm>

All districts OR indicate specific districts:  1<sup>st</sup>  2<sup>nd</sup>  3<sup>rd</sup>  4<sup>th</sup>  5<sup>th</sup>  7<sup>th</sup>  8<sup>th</sup>  9<sup>th</sup>  10<sup>th</sup>

### PART II. ONLINE ORIENTATION INFORMATION (Check the orientation you wish to attend)

**Spring:** Saturday, April 10; Sunday, April 11; Saturday, April 17; Sunday, April 18.

**Fall:** Saturday, September 18; Sunday, September 19; Saturday, September 25; Sunday, September 26.

Have you attended orientation in the past?  No  Yes, specify year and location:

Orientation materials are provided electronically via DropBox link which you will receive in advance once your application and payment have been processed.

**Sign language interpreters ONLY.** Check this box if you are applying for CEUs. This training has been approved for 1.3 CEUs or 13 contact hours with the Registry of Interpreters for the Deaf (RID).

### PART III. INTERPRETING AND TRANSLATION EXPERIENCE (Check all that apply)

Do you currently provide interpreting services?  No  Yes. If yes, for whom?  Individual  Group  Family  Other:

How frequently do you provide interpreting services?  Never  Occasionally  Monthly  Weekly  Daily

What type of setting?  
 Circuit court  Municipal court  Federal court  Law office  Administrative hearing  
 Police station  Jail or prison  Hospital or clinic  School  Business  Conference  
 Social services  Community  Other (specify):

What type of interpretation?  
 Simultaneous  Consecutive  Sight Translation  Conference

Do you currently provide translation services?  No  Yes. If yes, indicate the type of documents:  Legal  Medical  Business  
 Technical  Other (specify):

### PART IV. EDUCATIONAL DEGREE OR LEGAL OR INTERPRETING TRAINING

Institution/Organization	Location	Start Date	End Date	Area of Study/Degree/Training

## PART V. MEMBERSHIPS, CREDENTIALS, LICENSES, OR OTHER CERTIFICATION

Membership/Credential/License/Other Certification	Month & Year Obtained	Sponsor/Agency/Association

## PART VI. GENERAL INFORMATION

How did you hear about Wisconsin's Court Interpreter Program?

- Internet  Colleague/Friend/Family  Career panel  Educational institution  Press release  
 Other (*specify*):

Why are you interested in working as a court interpreter?

Would you be available to work for the Wisconsin courts on a regular basis?  Yes  No

## PART VII. ACCOMMODATION REQUEST (*if applicable*)

The Wisconsin Court System will provide reasonable accommodations to qualified individuals who request them.

I am requesting an accommodation because of a disability. Please describe in detail the accommodation you are requesting below:

## HOW TO SUBMIT THE APPLICATION AND PAYMENT: *This application form and fee of \$150 must be received by the corresponding deadline.*

If you are paying by check or money order (MO):	If you are paying by credit card:
<ul style="list-style-type: none"><li>▶ Make check or MO payable to Wisconsin Supreme Court</li><li>▶ Mail completed application with check or MO to: Office of Court Operations 110 East Main Street, Suite #410 Madison, WI 53703-3328 Attn. Court Interpreter Program</li></ul>	<ul style="list-style-type: none"><li>▶ Call the Court Interpreter Program at 608.266.8635 for instructions on how to pay using a credit card. Credit card payments are processed Monday-Thursday.</li><li>▶ Once payment is made, email the completed application to: <a href="mailto:alexandra.wirth@wicourts.gov">alexandra.wirth@wicourts.gov</a> or fax application to: 608.267.0911</li></ul>

**Questions? Contact the Court Interpreter Program at 608.266.8635 or [alexandra.wirth@wicourts.gov](mailto:alexandra.wirth@wicourts.gov)**